

# AN OVERVIEW OF DEVELOPMENT OF AGRICULTURAL ECONOMY IN THE MEKONG DELTA

Nguyen Huu Dang and Vo Thanh Danh<sup>1</sup>

## 1. INTRODUCTION

The Mekong Delta (MD) is located in the lower part of Mekong river. Total area is approximately 40,000 km<sup>2</sup>. With the fertile soils and the abundant water sources, the MD is the main agricultural production region in Vietnam. Rice area is about four million ha producing more than annual eighteen million tons of rice, which is a half of total amount of paddy rice in the country. Beside rice product, the Delta is a biggest sugar cane producer accounted for one-third amount of the country. Fruit production is also an advantage of the MD with more than 252,000 thousand ha and three million tons of fruit annually. Establishing the large fruit production areas in recent years in Can Tho, Vinh Long, Ben Tre, Dong Thap, and Tien Giang provinces created an absolute advantage for the Delta to become a largest fruit specialization zone of the country. Livestock is second important sector in its agricultural economy. The Delta's share of pig production volume is twenty-four percent of the country. Aquaculture is also a leading production sector with more than sixty percent production value in the country.

According to the UNDP development report (1999), the MD's development index is at the average position. Among seven economic zones, the human development index ranges at the third and lower than the country's average position. It is said that the poor human resource is the most disadvantage to develop the MD. Economically, although GDP per capita is relatively high (at the third position and accounted for twenty-one percent of total GDP of the country), the share of agriculture economy in total GDP is very large (55 percent compared with thirty percent of the country) with a growth rate of this sector is about 3.1 percent per year.

In recent years there is a trend of increasing shares of industry and service sectors while share of agriculture is declining in the country's economic structure. Despite of declining of agricultural sector's contribution to total economic values of the country, the MD is still the most agricultural production area with various agricultural products having the comparative advantages. The annual growth rate

---

<sup>1</sup> Lecturers of School of Economics and Business Administration, Cantho University

of agricultural sector in the period of 2000-2004 is seven percent which is significantly higher than the other regions of the country. The contribution of impressive growth rate is explained by the record of increasing in aquaculture sector by seventeen percent per year while the crop and livestock sectors increases at the modest growth rate of 3.1 percent per year. For aquaculture sector, the average growth rate in this period is higher than almost twice comparing with the period of 1995-2000. Currently, there is a big change in the structure of agricultural production toward the aquaculture sector. Consequently, land used for rice and crop production is reduced by 200,000 ha (from 2,082,662 ha reduces to 1,894,084 ha) and serving for aquaculture production (from 445,000 ha increases to 644,800 ha). This shows the evidence that the agricultural development in the MD in recent years has been changed toward high value-added production sector like aquaculture sector while the rice production has played less important role as in the time of economic reform in 1986.

This paper aims to review the development of agriculture sector in the MD. The specific objectives are:

1. to review the growth and the structure change of agricultural sector;
2. to measure the contribution of agricultural sector to the MD economy;
3. to measure the specialization in the production for the main agricultural products; and
4. to set up recommendations for further researches to find out the possible solutions for higher level of agricultural development.

Data used in the paper is collected from the General Statistics Office (GSO) in the period of 1995-2005. Additionally, the socio-economic statistics of thirteen provinces in the MD are also employed in the analyses. To show the specialization in the production of main crops in the MD, the specialization index (SP) is used. In the model, if  $SP_{ij}$  is greater than one, it means province j is specialized in commodity i.

$$SP_{ij} = R_{ij}/R_i \cdot R_{ij} = A_{ij}/\sum A_{ij} \cdot R_i = A_i/\sum A_i$$

Where  $SP_{ij}$ : Specialization index of commodity i in province j;

$R_{ij}$ : Proportion of commodity i in harvested area of province j;

$R_i$ : Proportion of commodity i in harvested area of the MD;

$A_{ij}$ : Harvested area of commodity i in province j; and

$A_i$ : Harvested area of commodity  $i$  in the MD.

The paper is organized in four sections. Section 1 presents an overview of the growth and the structure change of agricultural sector. Section 2 shows the contribution of agricultural sector to the regional economy. Section 3 presents the analysis of the specialization in producing main agricultural products in the MD. Lastly, section 4 presents the recommendation for policy implications and further researches in the field of agricultural economics.

## **2. An Overview of Growth and Structure Change in Agriculture**

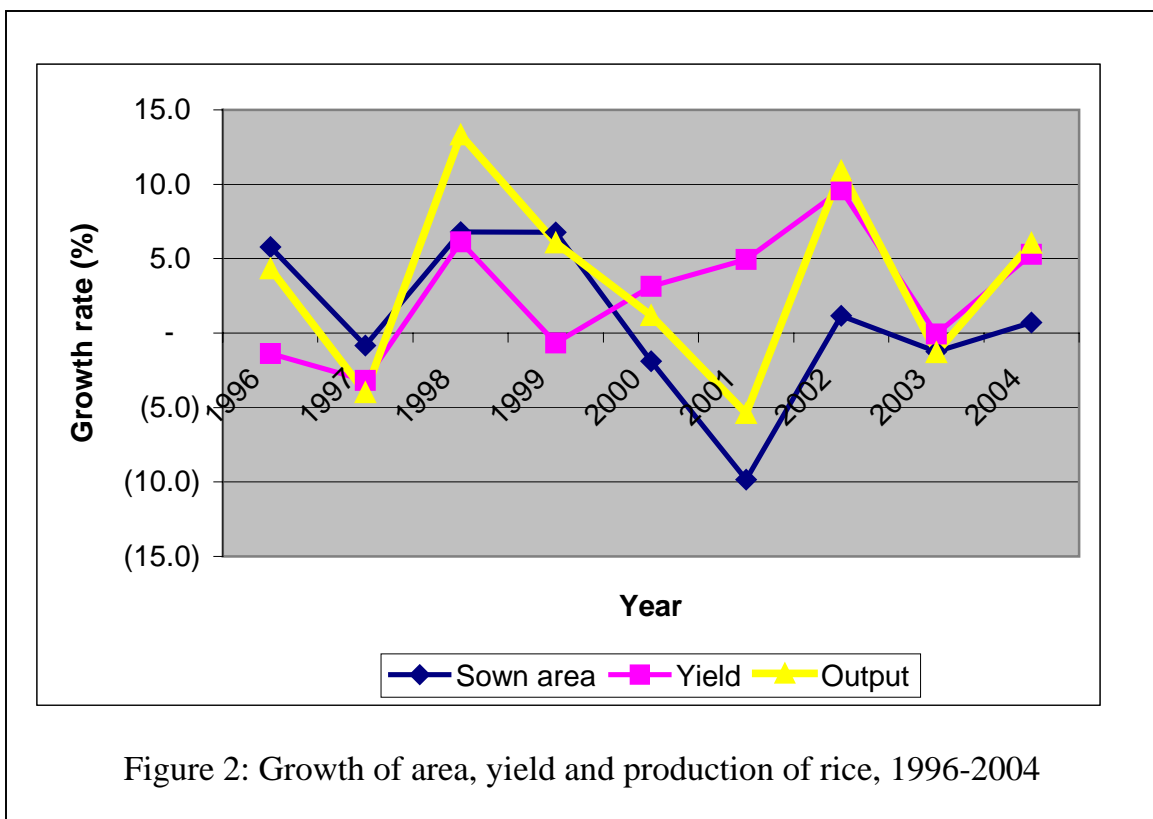
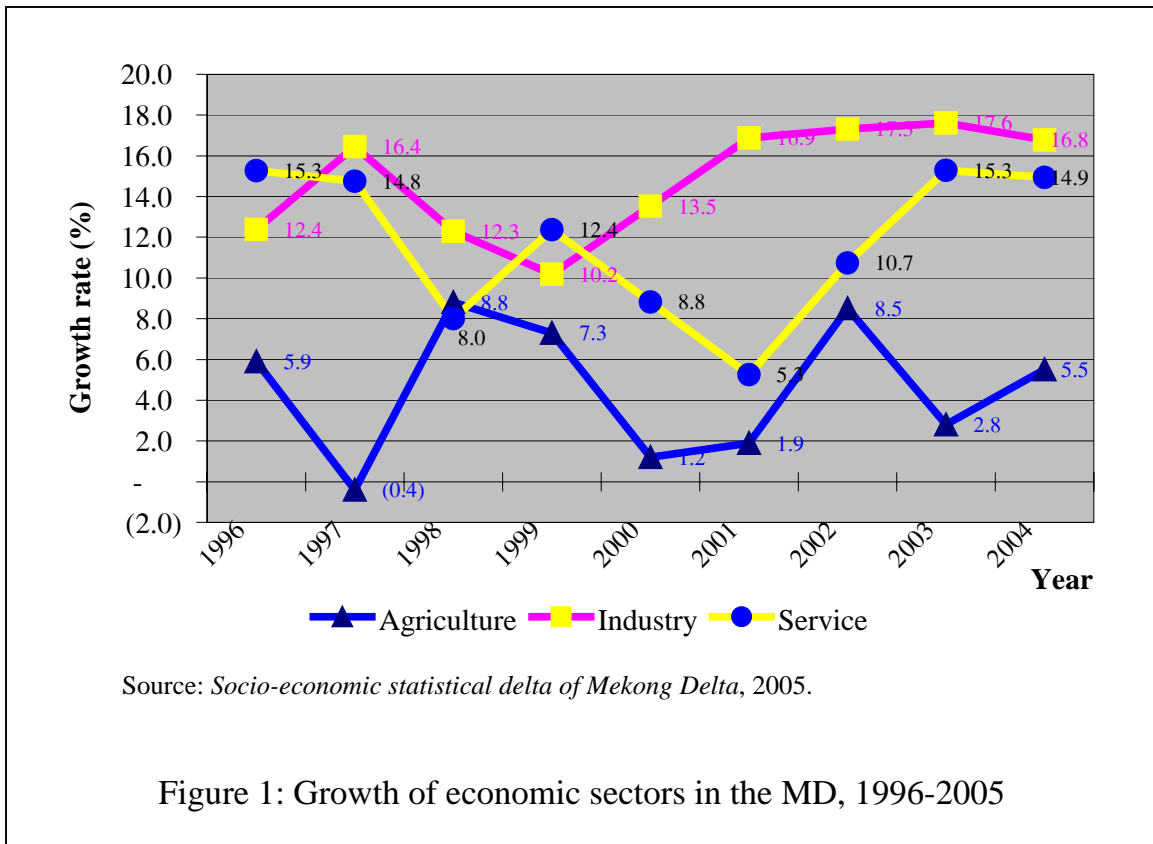
### **2.1. Growth of agricultural sector**

The MD has a highly economic growth in the period of 1996-2004 with annual growth rate of 11.2 percent while at the same time the annual growth rate of the country is 7.0 percent. In the recession period of the country economy during 1997-1999, under the impacts of the Asian financial crisis, the MD still maintained the economic growth rate at 8.0-10.0 percent per year, while those of the country fell to the lowest rate of 4.8 to 5.8 percent per year, which shows that the regional economy was not affected much by the Asian financial crisis than those of the country. In this period, on average, three economic sectors as agriculture, industry and service gained yearly growth rates of 4.6 percent, 14.7 percent and 11.6 percent, respectively. Figure 1 shows the growth of the three economic sectors in the period of 1996-2004. Up to 1999, industry and services sectors had a low growth while agricultural sector had an impressive growth rate of eight percent per year. However, since 2000 both industry and services sectors recovered and maintained a growth rate at the high level of the two digits whereas the agricultural sector showed the fluctuation in the growth path. In 2004, growth of agricultural sector was only at 5.5 percent per year.

### **Rice production**

In the MD, rice is still the most important crop. In 2004, the total rice area of the MD is 3.8 million ha, accounted for 86 percent of total crops area. The average yield is 4.9 tons/ha. The total paddy rice production is 18.5 million tons. In the period of 2000-2004, the area decreases by 0.8 percent per year; the yield increases by 3.3 percent per year; and the output grows by 2.4 percent per year.

Figure 2 shows the trend of changes in area, yield, and production of rice in this period.



There are three annual rice crops in the MD; namely, Winter-Spring, Summer-Autumn, and Autumn-Winter. The cultivation area in the Winter-Spring crop, on average, decreases by 0.8 percent per year and the yield increases by 2.3 percent per year. This is the main crop providing rice for exporting. The cultivation area in the Summer-Autumn crop, on average, decreases by 1.8 percent per year and the yield increases by 4.0 percent per year. The cultivation area in the Autumn-Winter crop increases by 1.8 percent per year and the yield increases by 3.1 percent per year. Totally, rice production in the MD increases by 22.1 percent in the period of 2000-2004. It is said that the increase of rice production in this period based mainly on the increase of rice yield in the context of decreasing in the cultivation area. This shows an interesting result in evaluating the development of rice sector in the region. A change to intensive farming system in recent years in stead of increasing the cultivation area for rice in 1990s helped keeping and pushing the rice production. Table 1 shows the growth of rice production in the period of 2000-2004.

In the agricultural development process, the MD faces a new challenge to its old rice farming system. Exploiting natural resources for the rice production with the three crops system whole year created serious consequences in the sustainability of rice production system. The first problem is the efficiency of water resource for competing crops. That is impossible to fully provide water for multicropping in the whole region, despite integration with the cropping calendar, because rice has a great need of water to develop. On the other hand, the multicropping in upstream areas is causing lack of water in the downstream areas to increase saline intrusion and acid sulfate level in dry season. The second problem is the soil erosion. Along with modern input uses, a rotation system three crops per year degraded the soil seriously. The fact of yield decrease and investing more modern inputs fertilizers and pesticides to keep the yield constant is observed in many places in the region. Additionally, using modern inputs as fertilizers and pesticides that is not under the control creates environmental impacts in terms of pollution of water sources, in turn, raises the health risk for the community.

### **Aquaculture**

The causal of the decrease in rice area in this time is because of the Project 09/2000/NQ-CP demanding a change of transferring a part of low yield rice areas

to aquaculture production. In 2005, there are 297,187 ha of rice area among 310,841 ha of lands transferred to aquaculture production and it is accounted for 84 percent of total lands transferred to aquaculture production in the country.

Table 1: Rice production in the MD, 2000-2004

Item	2000	2001	2002	2003	2004	Annual average growth rate (%)
Total						
Area (thousand ha)	3,947.4	3,789.9	3,834.3	3,786.3	3,812.8	-0.8
Yield (ton/ha)	4.3	4.2	4.6	4.6	4.9	3.3
Output (thousand ton)	16,913.6	16,001.1	17,744.5	17,513.4	18,569.3	2.4
In which						
Winter-Spring crop:						
Area (thousand ha)	1,520.6	1,537.6	1,513.7	1,499.0	1,465.1	-0.8
Yield (ton/ha)	5.29	5.04	5.70	5.66	5.87	2.3
Output (thousand ton)	8,039.7	7,756.5	8,631.7	8,486.9	8,606.9	1.7
Summer-Autumn crop:						
Area (thousand ha)	1,676.6	1,567.2	1,587.1	1,563.1	1,555.7	-1.8
Yield (ton/ha)	3.82	3.76	4.10	4.06	4.47	4.0
Output (thousand ton)	6,411.0	5,886.0	6,509.7	6,346.5	6,953.4	2.1
Autumn-Winter crop:						
Area (thousand ha)	204.9	244.3	313.2	347.2	402.3	1.8
Yield (ton/ha)	3.56	3.49	3.67	3.80	4.03	3.1
Output (thousand ton)	728.8	852.4	1,149.8	1,318.2	1,619.3	22.1

Source: Socio-economic Statistics of Mekong Delta, 2005.

Table 2 shows the trend of change in rice cultivation area to aquaculture production. The change has happened rapidly since 2000. In 2000, especially, the rice area transferred to aquaculture area was at the record of 132,852 ha, which was more than forty percent of total transferred areas during the period 1999-2005.

Table 2: The change in rice cultivation area to aquaculture production, 1999-2005

Unit: ha

Region	1999	2000	2001	2002	2003	2004	2005	1999-2005
Vietnam	9,806	36,214	141,530	61,911	71,429	28,293	28,086	377,269
Mekong Delta	4,237	28,868	132,852	49,384	62,170	16,718	16,612	310,841

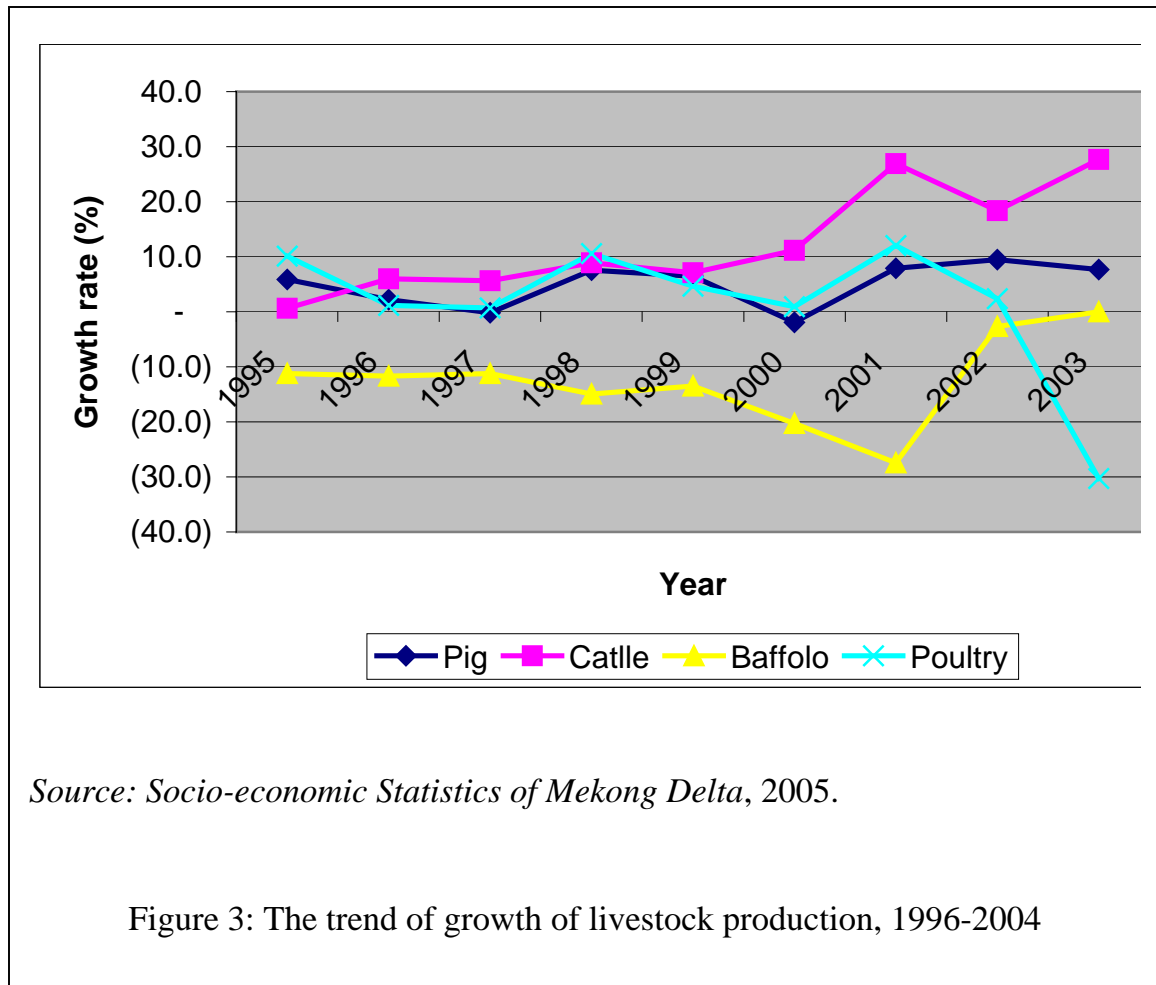
*Source: Ministry of Fishery, March 2006.*

In 2005, the area of aquaculture production in the MD is 685,250 ha among the total aquaculture area 959,945 ha of the country. It produces 1,004,257 ton with export value of 1.5 billion \$USD. However, rapid growth of aquaculture production activities caused many problems relating environment degradation and pollution. It is considered as the main culprit to destroy the ecology systems that in the past used to be very rich. Increasing the area of aquaculture culturing destroyed the coastal forests. New idea of the farming model so-called rice-shrimp system led to the salinity situation of the rice fields. Seeking a new farming system with a friendly environmental reconciliation will be a right selection for the Delta.

### **Livestock**

Livestock sector contributes a share of 10 percent to agriculture sector with annual growth rate of 6.27 percent in the period of 2000-2004. In 2004, however, livestock sector is negatively affected by bird flu disease. Pig production is the main component in livestock sector with more than 50 percent of production value. The pig herds in 2004 reached to 3,713,000 heads, occupied to 14.1 percent of total of the country, with an annual growth rate 5.67 percent in the period of 2000-2004. Cattle production is at the second position. Cattle production is increasing rapidly with an annual growth rate of 20.76 percent in the period of 2000-2004. Currently, the cattle herds are about 8.5 percent of total of the country.

Figure 3 shows the trend of growth of livestock sector in the MD in the period of 1999-2003.



## 2.2. Changes in economic structure

The economic structure in the MD changed fast during period of 1996-2000 toward increasing shares of industry and service sectors, and decreasing share of agriculture sector. In 2000, share of agriculture sector in the GDP fell to 48.6 percent, decreasing by around ten percent in comparing with that in 1996. This resulted from an increase in shares of industry and service by around six percent and four percent, respectively. Although the situation was continuously improved in recent years, its economic structure was still not much changed. In 2004, the shares of agriculture, industry, and services were 41.6 percent, 34.9 percent and 23.5 percent, respectively, while those of the country were 21.8 percent, 40.0

percent and 38.2 percent, respectively. Table 3 shows the economic structures of the MD and the country in the period of 1996-2004.

Table 3: Economic structure in the MD and the country, 1996-2004

Sector	Unit: %					
	1996		2000		2004	
	Mekong Delta	Country	Mekong Delta	Country	Mekong Delta	Country
Agriculture	58.89	27.76	48.61	24.53	41.64	21.83
Industry	21.60	29.73	27.97	36.73	34.89	39.95
Service	19.51	42.51	23.42	38.74	23.47	38.22
Total	100.00	100.00	100.00	100.00	100.00	100.00

*Source: Socio-economic Statistics of Mekong Delta, 2005*

In the agricultural sector, it is classified in three sectors, namely, crops, livestock and fishery, and agricultural service. In 1995, the proportion of crops, livestock and fishery, and agricultural service were 84.4 percent, 9.8 percent and 5.4 percent, respectively. It changed a little toward increasing the shares of livestock and fishery and agricultural service, and decreasing the share of crops. In 2004, the shares of crops, livestock and fishery, and agricultural service were 82.7 percent, 10.5 and 6.8 percent, respectively. Figure 3 shows the internal structure of agriculture in 1995 and 2004. Through ten years development, the agricultural economy does not change much with the fact that crops is still a main production sector and the agricultural services has a small contribution to the development process.

In the internal structure of agriculture sector, the MD increases the share of livestock, fishery production, and agricultural services. In the comparison with the country's agricultural economic structure, the MD's share of agricultural services and livestock-fishery are higher twice and 1.5-1.8 time, respectively. This showed that in the MD there is a trend to modernize the agricultural economy with agricultural services playing a more important role in the agriculture sector. Table 4 shows the change of structure of agricultural production in the period of 1990-2002. At the national level, there is the trend of declining in the share of crop values in the total agricultural value. Meanwhile, the share of crop production in

the MD goes up since 1990. This situation needs to be improved in order to create the new wave of development in the agricultural sector in the MD.

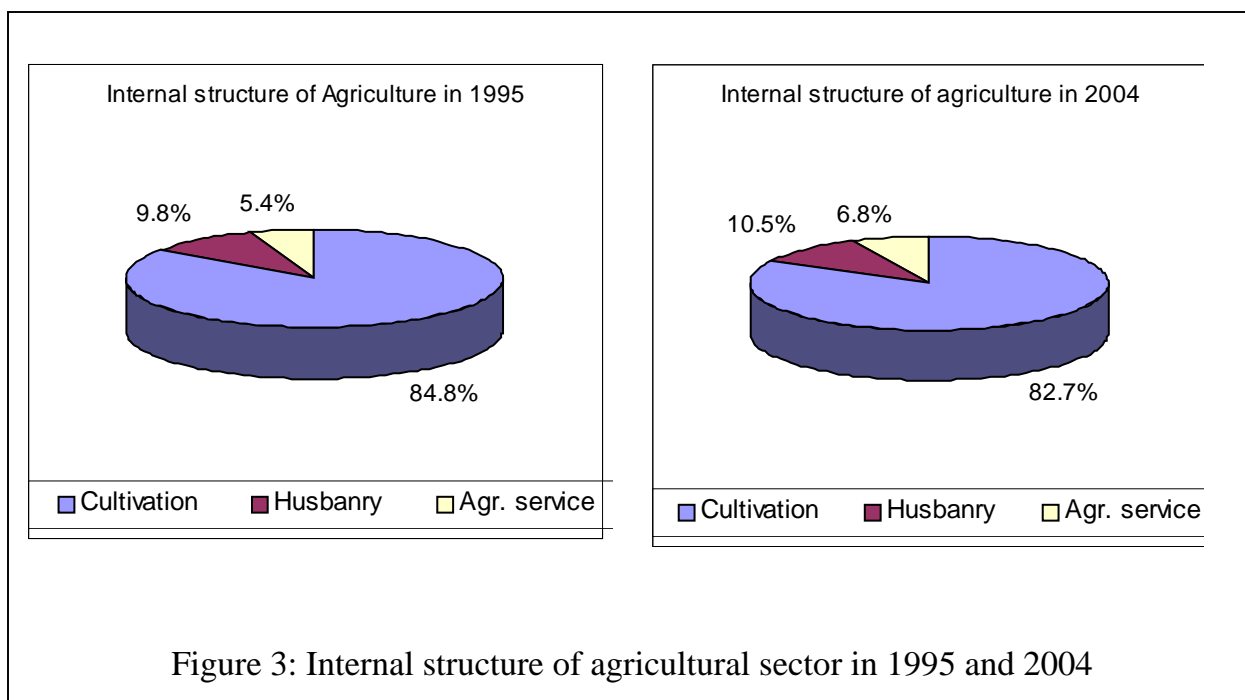


Table 4: Structure of the agricultural economy in the MD, 1990-2002

Unit:%

Sector	1990		1995		2000		2001		2002	
	Coun-try	Me-kong Delta	Coun-try	Me-kong Delta	Coun-try	Me-kong Delta	Coun-try	Me-kong Delta	Coun-try	Me-kong Delta
Crops	79.3	58.1	78.1	69.2	78.2	66.0	77.9	61.2	76.5	61.8
Livestock and fishery	17.9	39.1	18.9	26.4	19.3	28.8	19.6	33.8	21.2	33.5
Agricultural services	2.8	2.8	3.0	4.4	2.5	5.3	2.5	5.0	2.3	4.7
Total	100.0	100.0	100.0	100.0	100.0	100.0	100.0	100.0	100.0	100.0

Source: Hong T.N. (2003)

### 3. The contributions of agricultural sector

The MD's economy is the agricultural-based economy. Agricultural production activities are the main economic activities in the region. There are 13 million people among the total population of 17.2 million people working in the agricultural sector. The annual growth rate of 12 percent is at the high record compared with other economic regions. However, the engine of growth is still dependent of agricultural production. The share of agricultural value to the regional GDP is averagely 45 percent. The MD, especially, contributes more than 80 percent of rice value and 50 percent of aquaculture value exported of the country.

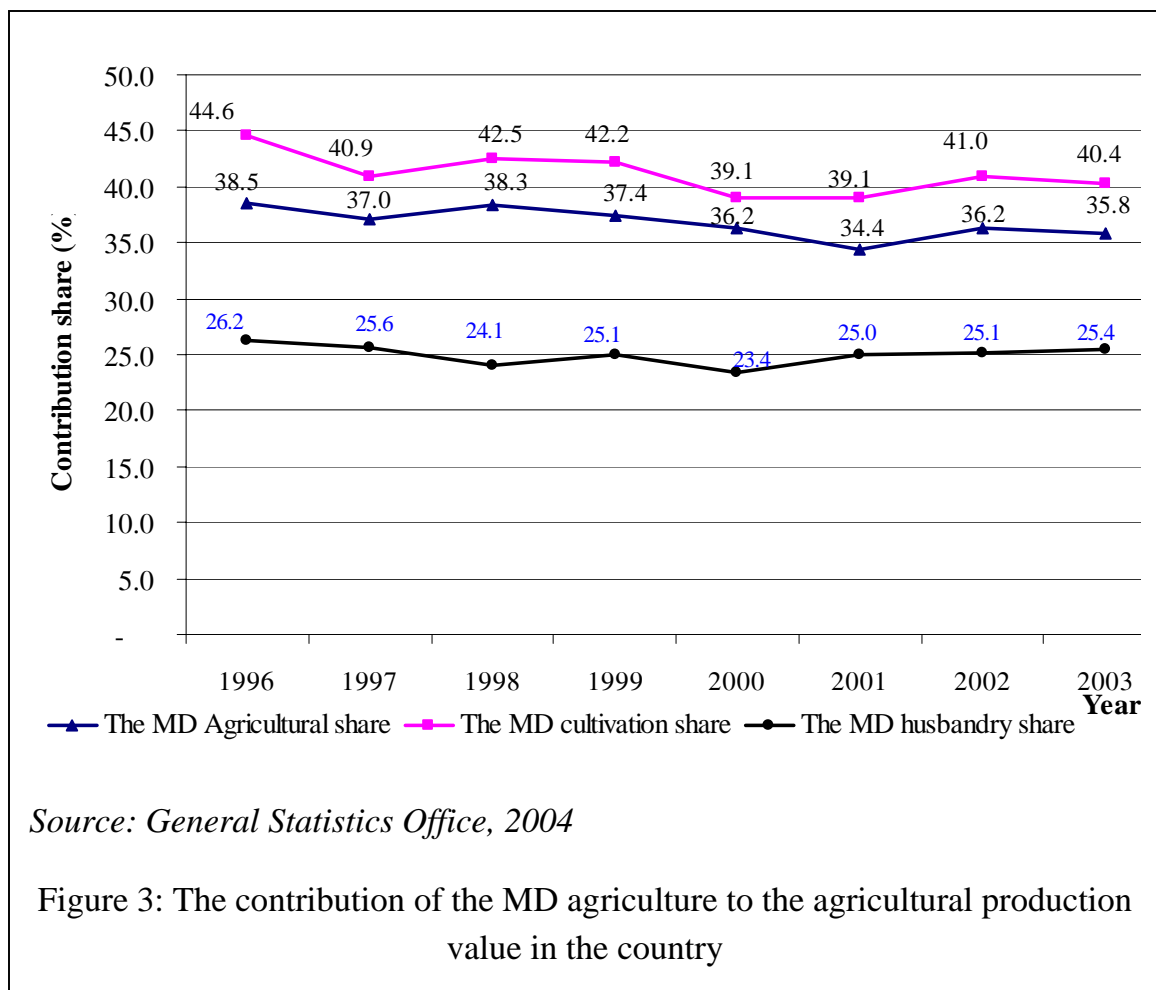
The contribution of the agricultural sector to the regional GDP tends to decline over time. From the proportion of 76.6 percent in 1995, it goes down 47.8 percent in 2004. The average decreasing rate is 3.2 percent per year. Table 5 shows the contribution of the agricultural sector to the regional GDP and its change in the period of 1995-2004.

Table 5: Share of agricultural value to regional GDP

Year	Agricultural value (billion VND)	GDP (billion VND)	Share of GDP (%)	Change (+/-)
1995	31,335.8	40,906.8	76.60	-
1996	37,084.2	48,876.6	75.87	-0.73
1997	38,678.7	54,425.4	71.07	-4.81
1998	48,747.1	64,228.2	75.90	4.83
1999	50,392.6	68,553.6	73.51	-2.39
2000	47,081.1	71,664.1	65.70	-7.81
2001	44,156.3	77,381.3	57.06	-8.63
2002	45,776.5	90,345.5	50.67	-6.40
2003	55,433.0	102,581.4	54.04	3.37
2004	57,867.8	121,063.0	47.80	-6.24

Source: Socio-economic Statistics of Mekong Delta

In the comparison with the country level, the MD' economy is more dependent on agriculture. In 1996, the shares of agriculture, industry, and services were 59.9 percent, 21.6 percent and 19.5 percent, respectively, while those of the country were 27.8 percent, 29.7 percent and 42.5 percent, respectively. The MD's agriculture sector contributes to a share of 60 percent of regional GDP. Meanwhile, the country agriculture sector contributes to a share of less than one-third of the national GDP. In addition, there is a trend of declining in the contribution of the MD's agricultural values to the total value of national agricultural production in the period of 1996-2004. In 1996, the share of contribution was 38.5 percent while it was 35.8 percent in 2004. Two main sectors crops and livestock declined around one to three percent. The decline in the shares of the national agriculture sectors raises the questions about the importance of agricultural production in the coming time.



#### 4. Specialization in agricultural production

Whole region is considered as a specialization area of agricultural production of the country. Besides rice and aquaculture found everywhere in the region, other important agricultural products are also produced with the large quantity for domestic consumption and exportation. Maize, cereals, fruit, vegetable, and perennial crops are mentioned in this paper. These are main agricultural products that are known as special products of the MD. To measure the degree of specialization in producing these products at the provincial level, the SP index is employed. Results in Appendices 1 to 5 and summarized in Table 6 show that some provinces are the main producers of all products while other provinces are the main producers of a few products. Provinces specializing in all the products include Ben Tre and Tra Vinh. Provinces specializing in some products include Tien Giang, An Giang, Dong Thap, Soc Trang, Can Tho, Long An, Bac Lieu, Ca Mau, Hau Giang, and Vinh Long. Kien Giang is the only province in the Delta that does not specialize in these products.

Table 6: Specialization of main agricultural products in the MD

Product	Specialization area
Maize	Ben Tre, Tra Vinh, Tien Giang, An Giang, Dong Thap
Vegetable	Ben Tre, Tra Vinh, Tien Giang, An Giang, Soc Trang, Can Tho, Bac Lieu
Cereals	Ben Tre, Tra Vinh, Vinh Long, An Giang, Soc Trang, Ca Mau
Fruit	Ben Tre, Tra Vinh, Tien Giang, Can Tho, Hau Giang
Perennial crops	Ben Tre, Tra Vinh, Soc Trang, Ca Mau, Hau Giang, Long An

#### 5. Conclusion and Recommendation

The MD has the advantages in agricultural production compared with other regions in Vietnam. Growth rate of agriculture sector was higher than the average level of the country. Main agricultural products exported of the country were produced in the MD. The economic structure in the MD is presently moving toward increasing shares of industry and service, and decreasing share of agriculture.

In the internal economic structure of agriculture sector, crops and livestock and aquaculture dominated with more than eighty-two percent and ten percent, respectively, while agricultural services sector contributed the smallest share of less than eight percent. This shows that in order to develop the agricultural economy of the Delta, transferring agricultural economic structure strongly toward production sectors that can create more value-added services would be a right option.

The share of agricultural value to the regional GDP remains at the high proportion of forty-five percent. This shows that the growth of agricultural sector affects largely to the economic development of the Delta. Additionally, the contribution of the regional agricultural value to the country's agricultural value tends to decline and it raises the question about the Delta as a leading agricultural producer of the country in the future.

Beside rice and aquaculture considered as the most important agricultural products, main crops such as maize, cereals, vegetable, fruit, and perennial crops are agricultural products specialized in the MD. These products are found in most of provinces of the Delta. Establishing the specialization areas for these products would diversify agricultural production activities based on the advantages of the region.

However, in the development path, it is coping with the environmental issues in exploiting the natural resources in the agricultural production activities. Main economic sectors of the MD are rice production and aquaculture culturing. These are main culprits to destroy the ecology systems that in the past are very rich. As an example, transferring rice area to aquaculture production reduces the wetlands area and destroys the coastal forests. New idea of the farming model so-called rice-shrimp system led to the salinity situation of the rice fields. Seeking a new

farming system with a friendly environmental reconciliation will be a right option for the Delta.

Toward the modern agricultural economy, the followings are recommended:

1. Economic structure of agriculture sector needs to be changed with the priority set up for the agricultural services and livestock sectors. A strategy for aquaculture development should be carefully taken into account due to negative environmental impacts. Further researches on environmental impacts of aquaculture production system should be done so that the efficiency of the model can be measured.
2. The old rice farming system with exploiting the soil fertility via the three cropping system in year needs to be re-examined. The negative environmental impacts as soil erosion and water resource shortage for competing crops, especially in the dry season, would be evaluated in the further researches.
3. Declining of the MD's contribution of agricultural value to the country's agricultural value doubts of the leading role of the Delta as the most agricultural production region of the country in the future. Researches proposed should focus on prospects of agricultural development in the new context of both the region and the country.
4. Researches on the specialization of main agricultural products and market for these products are necessary to identify the potentials and limitations to development.

## REFERENCE

Anh, DT., Thinh, LD., Binh, VT. *Enhancing Sustainable Development of Diverse Agriculture in Viet Nam*. CAPSA working paper No 86. The United Nation (ESCAP).

Binh N.T. *Diversification development of agricultural production based on sensible exploitation of natural resources and environment protection in the mekong river delta region*. Sub- NIABB, 2002.

Chi P.D, Son D.K, Binh T.N, and Trien N.T. *What to Do for Vietnam Rural?* HCMC Publisher, 2003.

Dwayne Benjamin, Loren Brandt (University of Toronto). *Agriculture and Income Distribution in Rural Vietnam under Economic Reforms: A Tale of Two Regions*. World Bank project investigating the impact of economic reforms on households in Vietnam. 2002.

Dung V.H. *Structural Change of the Mekong Delta Economy*. Journal of Economic Study, pp. 50-62, 2003.

Luat, NV. *Crop diversification in Viet Nam*. Cuulong Delta Rice Research Institute, 2002.

Nam N.V. *Markets for Agricultural Products and Price Uncertainty Control*. Statistic Publisher. 2005.

Pedro Estellès. *Sustainable Development in the Mekong Delta, Viet Nam*. Published by Afdeling for Miljøstudier/Center for Environmental Studies, June 2002.

Quoc Thang, *Mekong river delta develops as key economic development region*. 2006. Available in <http://www.tosercohanoi.com/>

Statistic Offices of Can Tho city. *Socio-economic statistics of Mekong Delta*. 2005 and 2001.

Tan P.S. *Current status, potentials and solutions for increasing farmers' income from planted area*. Cuu Long Delta rice research institute, 2000.

The Ministry of Agriculture and Rural Development (MARD). *Master plan of the MD's Agriculture in period of 2000-2010*. Report 2003.

The Sasakawa Peace Foundation of Japan. *Agricultural Development in Vietnam Economic Zones*. Agriculture Publish House, 2003.

## APPENDIX

Appendix 1: Maize specialization index in the MD, 2000-2004

Province	2000	2001	2002	2003	2004
Can Tho	0.49	0.37	0.45	0.41	0.36
Hau Giang	0.52	0.34	0.49	0.76	1.12
Long An	0.18	0.95	0.76	0.87	0.61
Tien Giang	1.62	0.98	1.02	1.01	1.21
Ben Tre	1.12	1.24	1.22	0.73	0.76
Dong Thap	1.37	1.11	1.34	1.43	1.28
Vinh Long	0.69	0.63	0.82	0.60	0.49
Tra Vinh	2.11	1.84	2.00	2.46	2.26
An Giang	2.52	2.61	2.29	2.23	2.22
Kien Giang	0.02	0.01	0.08	0.03	0.01
Soc Trang	1.46	1.27	1.01	0.64	0.94
Bac Lieu	-	0.19	0.18	0.26	0.37
Ca Mau	0.25	0.30	0.39	0.39	0.19

Appendix 2: Cereals specialization index in the MD, 2000-2004

Province	2000	2001	2002	2003	2004
Can Tho	0.10	0.07	0.06	0.07	0.07
Hau Giang	0.35	0.46	0.19	0.30	0.45
Long An	0.49	0.43	0.42	0.76	0.48
Tien Giang	0.76	0.40	0.35	0.33	0.41
Ben Tre	1.20	1.46	1.64	1.33	1.11
Dong Thap	-	-	-	-	-
Vinh Long	2.51	3.05	3.87	3.61	5.12
Tra Vinh	2.54	2.63	2.41	2.03	2.46
An Giang	2.21	1.95	1.60	1.91	0.39
Kien Giang	0.55	0.75	1.04	0.53	1.10
Soc Trang	1.06	1.00	0.98	1.26	1.61
Bac Lieu	-	-	0.78	0.95	0.97
Ca Mau	1.67	2.05	0.90	1.22	1.44

Appendix 3: Vegetable specialization index in the MD, 2000-2004

Province	2000	2001	2002	2003	2004
Can Tho	1.06	0.78	0.84	0.66	0.64
Hau Giang	0.87	0.82	0.77	0.87	0.88
Long An	0.62	0.44	0.85	0.91	0.72
Tien Giang	2.37	1.82	1.60	1.90	2.27
Ben Tre	1.39	1.34	1.12	1.04	0.90
Dong Thap	-	-	-	-	-
Vinh Long	-	-	-	-	-
Tra Vinh	2.35	1.88	2.05	1.99	2.23
An Giang	1.73	1.61	1.45	1.38	1.28
Kien Giang	0.11	0.11	0.16	0.12	0.11
Soc Trang	1.84	1.82	1.72	1.82	1.98
Bac Lieu	-	1.72	1.88	1.91	2.17
Ca Mau	0.76	1.31	0.88	0.91	0.94

Appendix 4: Perennial specialization index in the MD, 2000-2004

Province	2000	2001	2002	2003	2004
Can Tho	0.33	0.33	0.33	0.50	1.21
Hau Giang	3.35	2.35	2.32	2.43	2.01
Long An	2.41	2.79	4.04	2.70	2.17
Tien Giang	0.09	0.05	0.04	0.08	0.11
Ben Tre	3.73	3.31	3.19	3.14	2.82
Dong Thap	0.45	0.62	0.70	0.76	0.99
Vinh Long	0.43	0.44	0.41	0.40	0.49
Tra Vinh	1.09	1.35	1.41	1.57	1.47
An Giang	0.28	0.38	0.32	0.29	0.33
Kien Giang	0.37	0.34	0.35	0.34	0.26
Soc Trang	1.18	1.34	1.38	1.34	1.23
Bac Lieu	-	0.32	0.28	0.32	0.20
Ca Mau	0.94	1.44	1.15	1.12	0.92

Appendix 5: Fruit specialization index in the MD, 2000-2004

Province	2000	2001	2002	2003	2004
Can Tho	1.53	1.31	1.24	1.33	1.24
Hau Giang	1.55	1.52	1.63	1.53	1.52
Long An	0.15	0.14	0.23	0.15	0.15
Tien Giang	2.82	2.23	1.99	2.53	3.16
Ben Tre	5.03	5.17	5.21	5.37	5.45
Dong Thap	0.93	0.89	0.83	0.79	0.76
Vinh Long	-	-	-	-	-
Tra Vinh	1.14	1.09	1.10	1.13	1.09
An Giang	0.30	0.29	0.27	0.26	0.24
Kien Giang	0.49	0.42	0.48	0.42	0.39
Soc Trang	0.79	0.82	0.94	0.96	1.05
Bac Lieu	0.54	0.48	0.45	0.26	0.30
Ca Mau	0.79	1.32	0.63	0.71	0.88